

# Maryland Concrete Conference



**Maryland Department of Transportation  
State Highway Administration**

**Tim Smith, PE**

**Chief Engineer/ Deputy Administrator for Operations**

**March 12, 2019**

**Maryland Department of Transportation**

**STATE HIGHWAY ADMINISTRATION**

# Investment in Highways & Bridges

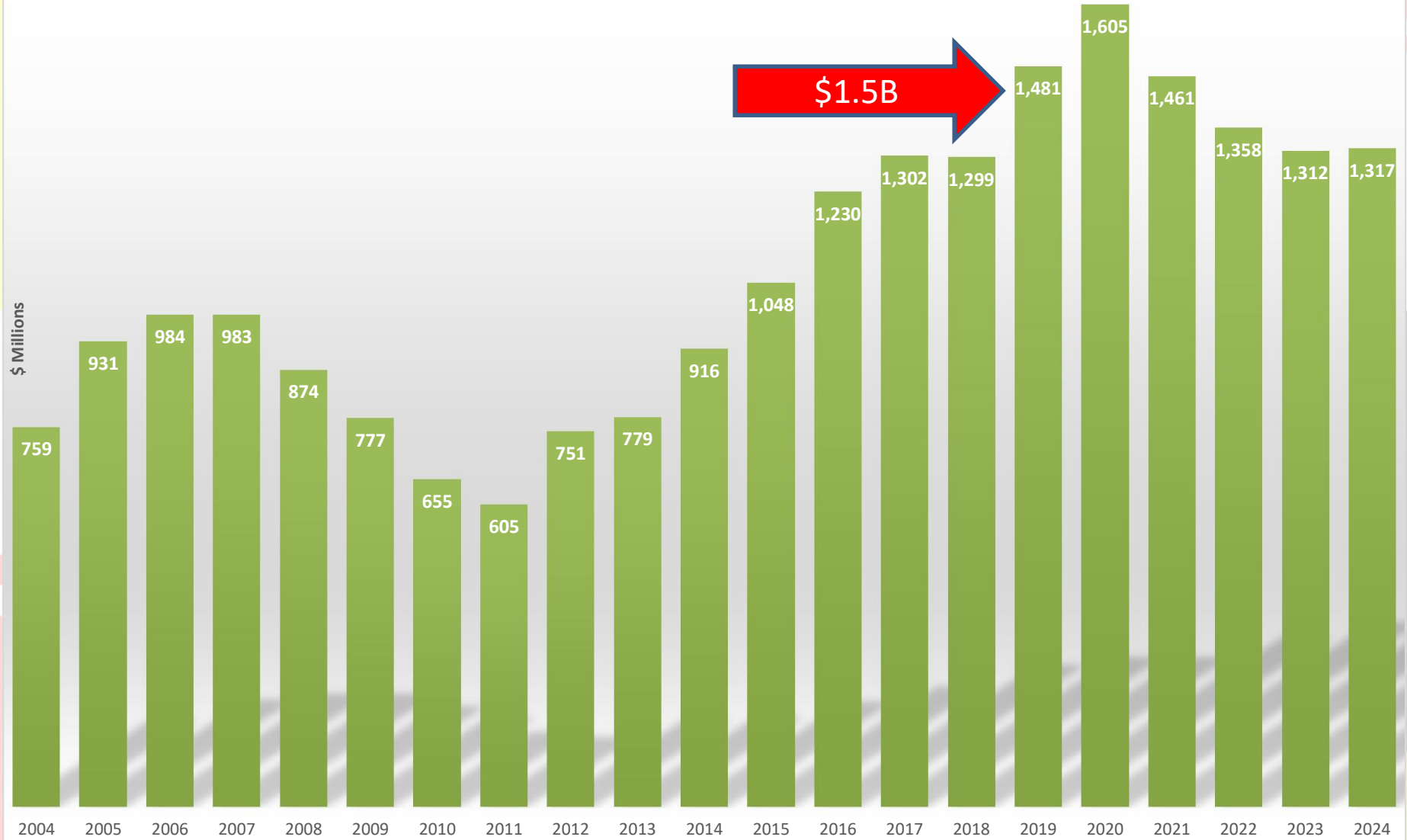
---

- Largest MDOT SHA program in history
  - \$4 Billion in 500+ active contracts
- Structurally Deficient Bridges
  - From 2015 all 69 bridges identified have been addressed – repaired, replaced or advertised
- Improved half of all state highway roadways
  - 8,500 lane-miles

# MDOT SHA's Total Expenditures

(in Millions)

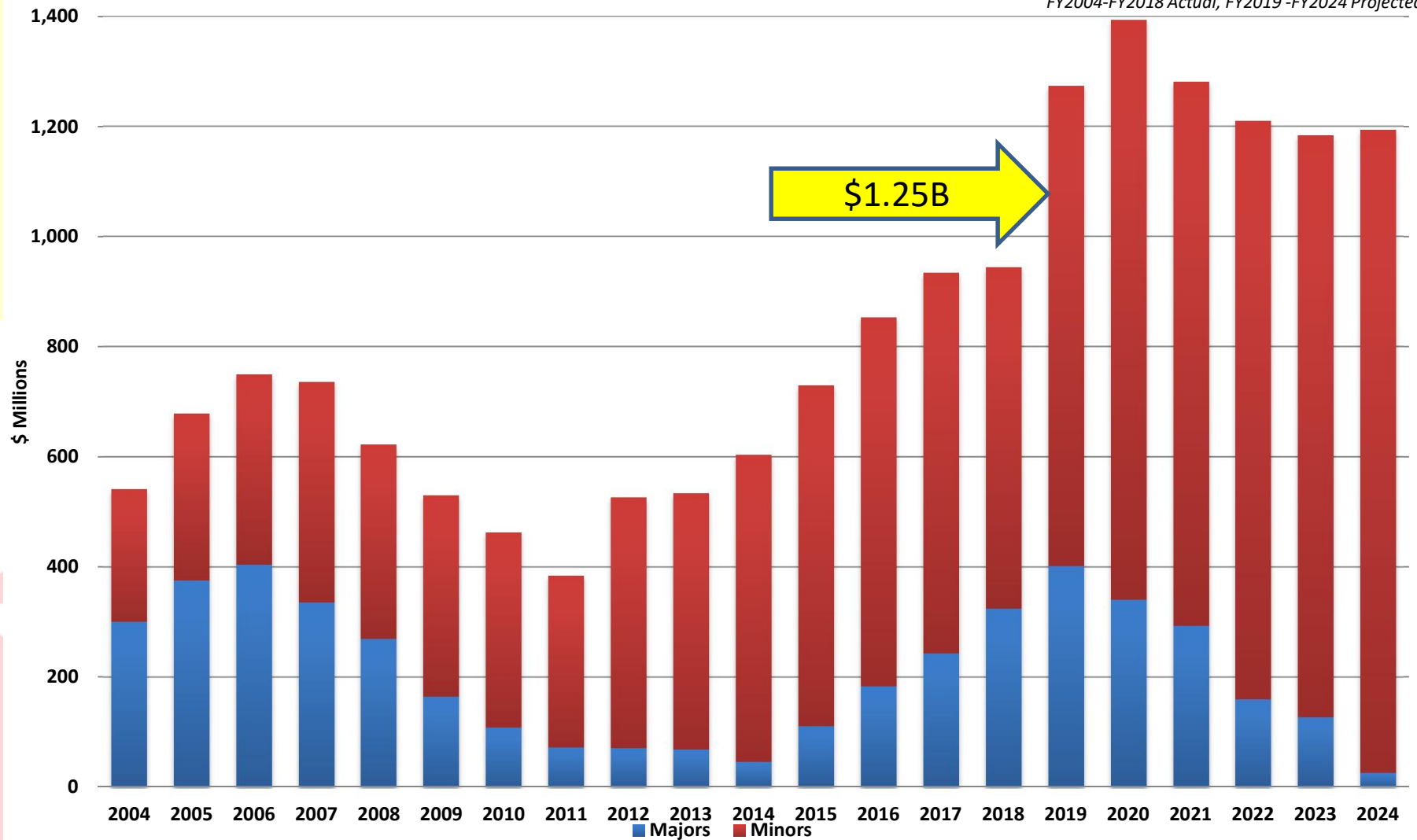
FY2004-FY2018 Actual, FY2019-FY2024 Projected



# MDOT SHA's Total Construction \$

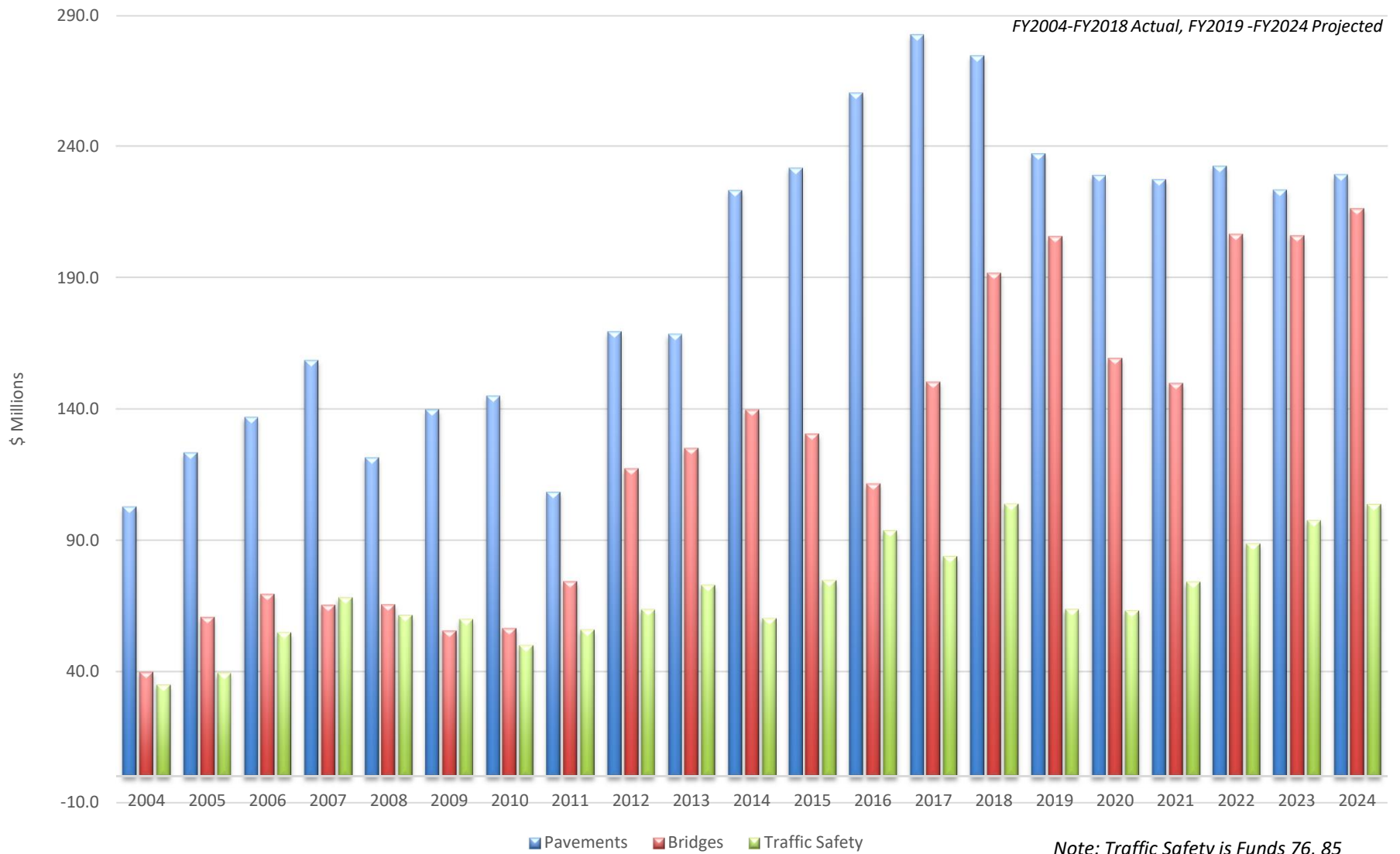
(in Millions)

FY2004-FY2018 Actual, FY2019 -FY2024 Projected



# Construction \$ by Category

(in Millions)



# Concrete Stats

---

- 120,000 CY of PCC
- 19,000 Pre-cast Structures
- 6-feet of precipitation had some influence on our statewide production



# MDOT SHA Focus Areas

---

- Innovation
  - ✓ Focusing on how we CAN rather than the can't
- Modernize
  - ✓ Harnessing technology to improve efficiency & performance
- Customer Experience
  - ✓ Recognizing we connect people to life's opportunities
- Communicate
  - ✓ Clearly, accurately and pro-actively explaining the why

# Project Development & Delivery

---



- Fall/Winter Advertisements
  - ✓ More bid openings in the same week
  - ✓ More early spring NTP
  - ✓ Adjustment in schedule priorities



# Accomplishments & Innovation

---

- Pre-Stressed PCC Beams for a deck-over crossing
  - MD 97 over Randolph Rd
  - Previously only done structural steel beams
- Self Consolidating PCC for bridge beams
- Tracking cylinders - Radio-frequency identification (RFID)

# New Challenges

---

- Innovation
  - High Early Strength Mixes
  - Performance based specs
- I-97 Patching – Maintenance of Traffic
- Work Zone and Incident Scene Safety
  - Exploring opportunities for risk sharing innovations

# Work Zone Safety

- Automated Flagger Assistance
  - ✓ MD 807 in AL County



- Encouraging more opportunities to advance safety

The background features a complex geometric design. On the left, there are vertical stripes of yellow and grey, with a diagonal line running from the top-left to the bottom-right. On the right, there are vertical stripes of yellow and grey, with a diagonal line running from the top-right to the bottom-left. In the center, there is a large, stylized cross shape composed of red and white segments. The cross has rounded ends and a white outline. The text "Thank you!" is centered over the cross and stripes.

**Thank you!**